



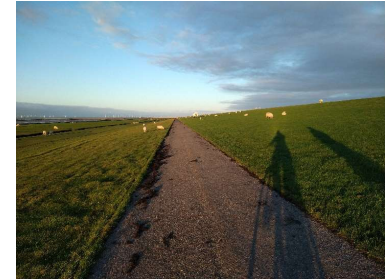
## Greetings from Nordstrand!

The Living Lab location Nordstrand, together with the Hallig Nordstrandischmoor, offers an exciting setting for experiencing the interplay between coastal protection, disaster management, and nature-based solutions.

Here, where the island of Strand once was located, dykes, marshes, and legends tell of the devastating storm surges that tore the land apart and shaped today's peninsula. Between the Wadden Sea, wind and waves one can feel how closely coastal protection, nature conservation and disaster risk management are linked.

This thematic diversity we would like to reflect on our bike tour, which we are planning for the summer of 2026 together with the local community of the peninsula and Hallig. To this end, we got on our bikes in October and went on a discovery tour on site. During our trip, we not only gained new knowledge about infrastructure and measures, but above all, got to know the people of Nordstrand and their relationship with the sea.

We look forward to continuing our collaboration with Nordstrand! **Greetings from Stefanie & Dorothea**



---

Stefanie Drautz und  
Dorothea Seeger – METAscales

---

Nordstrand, Schleswig-Holstein

---

October 2025

---